

Open Show - 11 June 2006

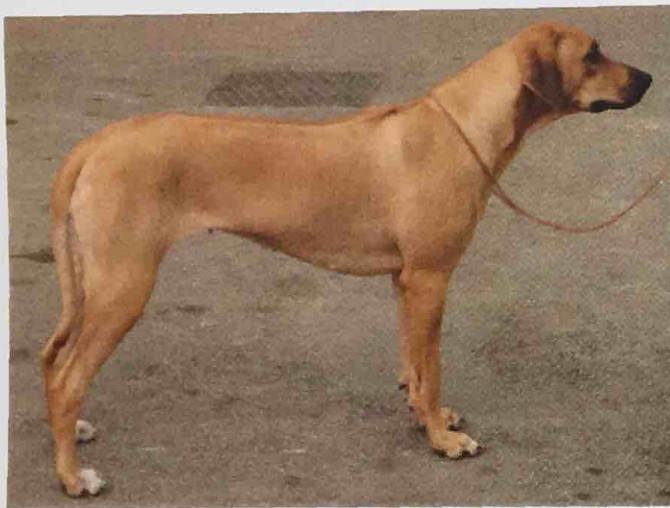
Judge : Mrs Lyn Hewson



Best in Show : Walamadengie Chieftan



Reserve Best in Show : Isiqa's Galija



Best Puppy in Show :
Priorpark Yetunde



Best Veteran in Show :
Rocksham Rio at Kylini

A wonderful day with some quality exhibits. I appreciated the consideration the Committee had given to the layout which gave a large ring in which the dogs could really get moving. My gratitude for the efforts of my stewards who kept things running smoothly which enabled me to fully concentrate on the job in hand! Thanks, also, for organising such wonderful weather!

On the whole ridges and crowns were as described in the Standard although I did find some with offset crowns and also ridges that could be slightly longer. Mouths were good with the correct scissor bite although in some instances teeth could be cleaner. One exhibit did have a level bite which, personally, I do not think is acceptable in a hunting dog. However, in this particular entry my major concern was the lack of angulation in hindquarters although I do appreciate that a Ridgeback does not have the sweeping quarters of an Afghan! Some exhibits had well made fronts but unfortunately the quarters did not correspond. I can only hope that where

this fault was evident in the younger exhibits, time and maturity will see improvement. Unfortunately, this falling was apparent on more mature dogs and where this deficiency appeared it was penalised. I was delighted with my final line ups and certainly finished up with dogs that I would love to have taken home! For me, overall, the bitches were of better quality than the dogs but, that being said, my BIS was a dog who, I felt, was an outstanding example of the breed.

Dogs

Minor Puppy: 1.

1. Deacon & Wilding's KIROMOL KALOU Promising wheaten dog of good size who appeared rather overawed and was not sure what was expected of him. Masculine with balanced head and good ear set. Deep chest, neat ridge. Reasonably angulated back and front. His movement was a little difficult to assess which would improve if both he and his handler get their act together.

Puppy: 6 (2) A difficult class to judge as handling needed to be perfected.

1. Hill's HYNDRIDGE NDULU SHAABONI Upstanding muscular r/wheaten. Good neck, shoulder and front with well constructed quarters. Well handled to display sound, steady movement which won him the class.

2. Perham's MWENGA'S BUTCH COURAGE Balanced head, well made front and adequate depth of chest. Level top line, nicely angulated quarters. Not as mature as 1 but has potential. Would prefer tighter feet.

3. Vincent's UMHLANDLA INJABULO FOR JEMATTI

Junior: 6 (4)

1. Kirby & Mansfield's SHINGWIDSI TSHEPA RIVA Handsome youngster with good head and expression. Good reach of neck. Front and rear angulation corresponded giving him a lovely shape and outline both standing and on the move. Would prefer heavier bone and more substance.

2. Roberts' ISIQA'S FLINT. Powerful dog with a well made front and deep chest. Needs to develop in quarters.

Yearling: 9 (5)

1. SHINGWIDSI TSHEPA RIVA

2. Clavin's HESPA GANYMEDE. Quality dog with all the essentials just needs more bend of stifle.

3. Schofield's INNCONG CICONIA BY OUSEBAY

Novice: 5 (2)

1. HESPA GANYMEDE

2. Williams & Cretney's ISIQA'S FLASH Liked the confirmation of this powerful youngster. Good head, neck & front. Level top line. Needs to develop in quarters. Do hope his handler can get some training!

3. Jones' SPRINGLINDI KIUME FROM MONDURI

Post Graduate: 8 (1) A very strong class of excellent dogs.

1. Dickson's WALAMADENGI CHIEFTAN Impressive, well balanced r/w

presenting a super outline both standing and on the move. Lovely masculine head. Dark eye, appealing expression. Powerful jaw. Well laid shoulder and good straight front. Deep chest, level top line, well set tail. Sturdy bone and neat feet. Strongly made quarters with correct bend of stifle. Excellent muscle tone and condition. Free, active movement. Handled well, **Best Dog & Best in Show**

2. Parson's PRIORPARK JUBA FOR NZURI. Handsome head, dark eye, good neck and shoulder. Level top line. Nicely angulated quarters which complimented his front construction. Moved steadily with good reach and drive. Would prefer lower tail set.

3. Morris' MORLINGCOURT MASTERPIECE

Minor Limit: 1 (1) Absent

Limit: 9 (6):

1. Carlton's UMHLANDLA LUWANBA, JW. Elegant dog with attractive, well balanced head and lovely expression. Decent reach of neck, excellent front construction with good infill. Deep chest, strong level top line. Short coupled. Well set tail. Muscular quarters. Neat feet. Moved with vigour and purpose. Liked him a lot but wish he had more bend of stifle.

2. Deacon & Wilding's KIROMOL KIVIVU. Smaller, more compact dog. Well balanced construction giving nice shape and outline. Preferred the bone of the winner.

3. Calland & Sanders' GUNTHWAITE CHIBANDA

Open: 6 (3):

1. Whittington & Mansfield's MATABELLE MONSONEDI OF HUNTERSLEAP. Powerful, light wheaten of correct size with good balance. Nice head with intelligent expression. Strong neck into good lay of shoulder with nicely angulated hind quarters. Deep chest, level top line, well set tail. Would prefer cleaner front action. **Reserve Best Dog.**

2. Fletcher's OUSEBAY TROJAN WARRIOR FOR KANTARIS. Handsome head, long neck to well made front with good width of forechest. Longer in body than 1. Nicely angulated quarters. Moved with good reach and drive. Just preferred the overall balance of the winner.

3. Mills' JHUMHA JARZA OF NZURI

Spec Beg. Beginners: 5 (2)

1. Perham's MWENDA'S DUTCH COURAGE

2. Vincent's UMHLANDLA INJABULO FOR JAMATTI

3. Williams & Cretney ISIQA'S FLASH

Veteran 4 (3)

1. HENSHALL'S SANSILVER KHWEBHA Youthful 7 year old in good condition. Handsome head, good neck & shoulder. Level top line. Well made quarters. Free, easy mover.

Bitches

Minor Puppy 2 (1)

1. Thorne's KWE KWE K'BEYA. Although alone, this puppy appealed. Nice balanced head and dark eye. Well constructed front with plenty of width. Well angulated quarters. Neat feet, strong bone. Little bit shallow in chest which I would expect at 7 months. Liked her a lot and hope that with age and experience she gains more confidence.

Puppy 7 (2)

1. Parson's PRIORPARK YETUNDE 10 month old wheaten. Although tall, feminine and elegant. Good head with strength of underjaw. Long neck to well made front. Deep chest and good ribbing. Strong top line. Powerful quarters and good feet. Lovely free movement. **BPIS.**

2. Gates' EAGLERIDGE CHELSEA GIRL. Wheaten although smaller in stature to 1 has strength and substance. Lovely head, strong neck, well made front with excellent shoulder and forechest. Correct depth of brisket. Strong quarters. Moved well.

3. Parrott's UMHLANDLA NGWELE

Junior 12 (4) Was spoilt for choice in this class.

1. Grayson-Wood's ISIQA'S GALIJA Super r/w beautifully constructed who gave the impression of power yet still retained elegance. Head, dark eye and expression all appealed. Long clean neck, lovely shoulder and front, good depth of rib and length of body. Strong quarters with correct bend of stifle. Moved powerfully covering plenty of ground. Appreciate that she is far from full maturity but has the physical construction of a hunter coupled with the "glamour" so important in a show dog. **Best Bitch & RBIS.**

2. Davis & Warren's IMOLA IMANI. Of a similar elegant, powerful build to 1 with a lovely feminine head although, perhaps, a shade heavier. Well laid shoulder, good angle to upper arm and reasonable depth of chest. Firm top line. Good strong quarters which complimented her front. Would prefer tighter feet.

3. Dunn's GODOLPHINS ONE COOL CAT AT KHANANGA. Another bitch with the qualities of 1 & 2. Unfortunately she was not moving soundly, on the day, and appeared to be favouring her shoulder.

Yearling 4

1. Bates' TIASTI TOO GOOD TO BE TRUE AT GUNTHWAITE Expertly handled red wheaten. Lovely balanced head, pleasing expression. Adequate reach of neck to good shoulder. Prominent forechest and good depth of rib. Strong loin. Ample bend of stifle. Well boned carrying good body weight. Moved steadily displaying good reach and drive. Presented a lovely outline standing but was running uphill slightly on the move.

2. IMOLA IMANI

3. Maylor's NYASSA BIBIANA

Novice: 5 (2)

1. Dickinson's SHAWEMA KRANGA. Although unplaced in a strong junior class, I liked this upstanding bitch. Well constructed of nice type but would benefit from some weight loss. Well made front with good upper arm. Good ribbing, level top line. Would prefer a bit more bend of stifle. Neat

feet, strong bone. Liked her head and expression.

2. Wilson's SHAWEMA K'REESHA. Litter sister to 1 with similar qualities. Not moving to advantage in the heat.

3. Jones' SPRINGLINDI FEMI

Post Graduate: 7 (1)

1. Lawless' HAYAWANI KAMAMBAA RANGI TO FAAHAC Imp. Elegant, liver nose bitch that I have admired for sometime. Lovely head and intelligent expression with good eye colour. Long, clean neck, well laid shoulder. Good width to front with strong straight bone. Deep ribs, strong loin. Well muscled quarters which matched her front construction. Moved soundly and steadily. Well arched toes and strong pasterns. Unobtrusively handled giving a clear view of her lovely outline. **RBB**

2. Hanson's MWENGA MYSTICAL MOONLIGHT AT ILIZULU. Feminine but with strength and substance. Good head with dark eye. Strong neck but would prefer a bit more length. Nicely made front with adequate hind angulation. Good depth and length of ribbing. Short, strong loin. Moved well but not with the verve of 1.

3. Henshall's Suhuba Kanzi

Minor Limit: 2

1. Agnew's CAINEABELS RED XCLUSIVE FOR MWENGA Imp Elegant red wheaten looking in good shape following her recent litter. Good head and expression with complimentary eye colour blending with her coat colour. Long, clean neck to sloping shoulder. Deep chest well ribbed back. Level top line. Muscular, well constructed quarters. Naturally, still needs to tighten in undercarriage.

2. Tredwell & Symonds' MORLINGCOURT MISS HIJINKS OF SHOMBAY. Smaller in stature and a different type. Nicely made in front with deep chest. Good neck and shoulder. Strong quarters, well set tail.

Limit: 5 (4)

1. Grayson-Wood's ISIQA'S FLIJS. Tall upstanding r/w bitch. Lovely head and expression. Good neck shoulder and front. Deep chest, level top line. Moderately angulated at the back. Nice spring of pastern but would prefer slightly tighter feet. Moved well, moved with a lot of scope.

Open: 8 (4)

1. Nash's MIRENGO'S MAIYA WITH MUTOKO JW, Strong wheaten with nice length of neck, scored in lay of shoulder and return of upper arm. Straight front with good width and depth of chest. Correctly made, muscular quarters. Good tail carriage. Nice head but would prefer more refinement and softer expression. Not with her usual handler but still gave an excellent performance covering the ground with long easy strides.

2. Selby's EILACK ROYA OF CLARISMORE. Lovely bitch of a type I admire. Feminine head and good expression with nice reach of neck into well laid shoulder. Would prefer a little more development in forechest and depth of brisket. Firm top line, short muscular loin and strong quarters. Free easy

movement.

3. Lawless' FAAHAC S'FIYAA, JW

Special Beginners: 3 (2)

1. MWENGA MYSTICAL MOONLIGHT AT ILIZULU

Veteran: 8 (4) A class of sprightly ladies who have obviously been given a great deal of devotion by their owners. Headed by

1. RIMMER'S ROCKSHAM RIO AT KYLINI 8 year old of good structure with pleasing head and expression. In excellent body condition moving with verve, still holding a strong top line. **Best Veteran**

2. Samuel's ZEJAK SENTI 10 ½ years old in good condition. Attractive frosted muzzle, moving round sedately as her years would dictate.

3. Storey's KAMBOND KIJAKAZI BY KIROMOL

Lyn Hewson (Judge)