

RHODESIAN RIDGEBACK CLUB OF GREAT BRITAIN

Golden Jubilee Open Show

Judge Mr E Patterson, Rocksham

I would like to thank the Officers and Committee of the Rhodesian Ridgeback Club of Great Britain for inviting me to judge at their Golden Jubilee Open Show at Tomlinsons on 9th June 2002. It was not only a privilege but an honour and I was delighted when I was informed, by the Show Secretary, that I had drawn a record entry for their open show 129 Hounds. Special mention must be made of Karen Moore and her team for such a well run and organised event.

In judging Rhodesian Ridgebacks I look for a hound that is capable of carrying out the job it was originally bred for. An athletic hound, but of substance, with the correct confirmation and balance to enable ease of work is required.

In my main winners I found what I was looking for, but was not disappointed with some of those who closely followed in the line ups. Given the quality of some classes, positions from first to reserve could change on a different day.

Overall temperaments were good, and apart from two hounds with very slightly off set crowns and another with a poor ridge, all ridges and crowns were correct. In the main, movement was good, but there was a number of hounds with incorrect front construction, poor front angulation or short in upper arms, giving an upright shoulder leading to poor front and unbalanced movement. To finish on a positive note, from most of the hounds seen on the day, I would like to congratulate the breeders for the overall quality and to the exhibitors for the condition and presentation of their Ridgebacks.

Minor Puppy Dog 0 entries

Puppy Dog 3 entries

- 1) Edge's **Maadfryt Manitoulin** 9mths nicely constructed puppy dog of good angulation both front and rear. Showing good forechest, length and depth of ribbing although I would like to have seen a bit more covering of the ribs. Good head with correct eye, played about a little on the move but covered the ground well when settled. Tends to carry his tail high on the move.
- 2) Cox's **Kylini Firecracker** 11mths another well constructed puppy dog, again as '1' good forechest, with nice length and depth of ribbing. Lovely masculine head with good dark eye. Did not have the coupling of '1' and was a little short in upper arm which showed on the move.
- 3) Fletcher's **Ousebay Trojan Warrior For Kantaris**.

Junior Dog 4 entries 1 absent

- 1) Barne's **Diamondridge Desperado** 15mths. Correct head with nice eye, of good length of back and coupling, showing nice forechest with good ribbing. Good rear construction but a little short in front upper arm which made him close in front movement but covered the ground well when viewed in profile.
- 2) Kirk's **Thokozani Hint Of Gold** 14mth. Nice head, not as strong as '1', with good eye. Well made up youngster of good bone, nice rear angulation, but front let him down, which showed on the move.
- 3) Dagley's **Janak Azha**.

Special Yearling Dog 5 entries 1 absent

- 1) **Diamondridge Desperado**
 - 2) **Thokozani Hint Of Gold**
 - 3) **Dunlop's Kuwinda Tiger**
- Res - **Janak Azha**

Novice Dog 2 entries

- 1) **Maadfryt Manitoulin**
- 2) **Kylini Firecracker**

Tyro Dog 1 entry

- 1) Maitland-Jones **Mtwapa Kirafiki** 21mths. Hound of good substance and overall length, with good depth of ribbing. Would like a little more forechest and more angulations both front and rear. Tends to move loose in front and wide in rear.

Post Graduate Dog 3 entries 1 absent

- 1) Woodrow's **Mirengo's Muko Mako** 19mths. Pleasing head with good eye. V. good length and depth of

ribbing and coupling, with good forechest, overall a well constructed hound. Moved well and covered the ground with ease, only criticism would like a little more 'Go' in him tended to be very laid back.

2) **Diamondridge Desperado**

Minor Limit Dog 3 entries

- 1) Mill's **Jhumha Jarza Of Nzuri** 19mths. Young dog with a very strong head and good eye. Of good substance both in bone and body. Correct front angulation, but would like more turn of stifle. He still moved well and looks a very strong hound.
- 2) Hick's **Kiromol Kiwambo At Nuthouse** another well constructed hound, with a good head and eye. A lot to like of this fellow who covered the ground with ease when on the move. His overall score give him his placing, but 'very slightly' off set crowns cost him higher placing as I liked him. Pity!
- 3) Grayson-Wood's **Isiqa's Ijsa**.

Limit Dog 6 entries 1 absent

- 1) Shepherd's **Kuwindu Super Trooper** 20mths. Pleasing masculine head, eye acceptable. V good angulation both front and rear, of good length and depth of ribbing with plenty of forechest, well boned. Young hound who is starting to mature, looks well on the move but carries tail high. One I strongly considered.
 - 2) Henshall's **Sansilver Khwebu** 2yrs. All the good points of '1' with very good depth of chest. Not as strong in head as '1' and slightly heavy in body, lost out on movement, but another well bred hound. Should benefit from maturity.
 - 3) Coyne's **Ozubi's Jonagold**
- Res - Johnston's **Faahac Fjaala**.

Open Dog 12 entries 3 absent

Very strong class with first three placing very close, hounds of equal quality.

- 1) Maidment's **Mojomo Of Osbeni** 3yrs. Hound who caught my eye straight away. Of v. good construction with excellent length and depth of ribbing. Good length of coupling and reasonable forechest. Another with a strong masculine head with good eye. Moved with plenty of drive, but balanced, covering the ground with ease. A very nice specimen of the breed who will continue to improve as he matures. BD & BIS.
 - 2) Dunn's **Flametrees Obeche At Khananga** 2yrs. All the strengths of '1', but not yet the maturity. Not as settled on the move as '1' but again covered the ground with ease. Pity he met '1' on the day. One to watch for the future. RBD
 - 3) Schofield's **Ousebay** 2yrs. Pleasing head, eye acceptable. V good angulation both front and rear, of good length and depth of ribbing with plenty of forechest, well boned. Young hound who is starting to mature, looks well on the move but carries tail high. One I strongly considered.
- Res - Brown's **Chrisona**

Special beginner's Dog

- 1) **Maadfryt Manitou**
- 2) **Kylini Firecracker**

Veteran Dog or Bitch 11 entries 1 absent

- 1) Craven's **Ch. Hespera Huenda** 8yrs. Lovely feminine hound of good construction. Excellent forechest. Covered the ground well and did not show her 8 years. Strong contender in final line up.
 - 2) Firth's **Mwenga Mgeni** 8½yrs. As '1' nicely constructed hound, of good angulation both front and rear, with good forechest. Head not as pleasing as '1', but moved soundly and again did not show her age.
 - 3) Cairn's **Ch. Kairaba Fantasy At Rooinek**
- Res - Webster's **Mwenga Maatii of Janak**

Special Veteran Dog or Bitch 8 entries 5 absent

- 1) Davis's **Mirengo's Mayuri Of Imola** 11½ yrs. Lovely old lady who was enjoying her day out. Showing her age a little, but of good construction and typical of her breeding. Moved well on a shortened circuit.
- 2) Carlton's **Nyassa Rila Of Janak** 10½ yrs. Smaller type to '1', but well constructed with good head and eye. Moved well and v. well handled by Thomas, well done.

Minor Puppy Bitch 5 entries

Most pleasing class of the day, top three could change places on a different day.

- 1) Morris's **Bruet Song Of Kasenga** 7mth. What a beautiful hound, nice feminine head with v. good eye. Of good angulation both front and rear, with excellent length to ribbing and coupling. V good bone. Moved v. well carrying herself and covering the ground with ease. Excellent. Considered in final cut, but she'll have her day with more maturity. BPB & BPIS
 - 2) Nuttall's **Nyuki Kilifi At Home With Monduri** 6mth. Just one day over the six months and such a lovely baby. Very pleasing head and eye, well made up, of good angulation both front and rear. Showing v. good depth of chest at this early age. Not just the overall length of '1' but moved every bit as well. Simply lost out to '1' on maturity. Will watch this one with interest and expectations.
 - 3) Brand's **Htimsa Abeo Holly**
- Res - McDonald's **Anamcara Amarula**

Puppy Bitch 10 entries 2 absent

- 1) Rust's **Binta Cha Cha** 11mth. Of nice overall construction and good bone. Feminine head with good eye, would like less dark colouring to ears and muzzle. In first class condition moved well. Same overall standard as top three in MPB class. RBPB
- 2) Winstanley's **Maadfryt Kishni** 9mth. Again of reasonable construction, with similar head to '1'. Covered the ground well, but at this stage tends to lose the shape of her top line when on the move, just needs time.
- 3) Maitland-Jones's **Mtwapa Shukrani**
Res - Schofield's **Ousebay Inca's Gold**

Junior Bitch 9 entries 1 absent

- 1) Grayson Wood's **Isiqa's Flijs** 16mths. Nice feminine hound, well up to size, of good bone. Good forechest and ribbing. Nice overall length, good head, slightly spoilt with round eye. Covered the ground well when on the move.
- 2) Storey's **Kiromao Kianga** 16mths. Stronger less feminine head to '1', with good eye. As '1' well boned and similar overall construction and quality. Covered the ground well, but movement looks exaggerated and loose.
- 3) Baillie & Ringer's **Flametrees Simply The Best At Zokozza**
Res - Selby's **Ngami Lutoto Of Eilack**

Special Yearling Bitch 5 entries 1 absent 1 wd

- 1) Parson's **Touch Of Kryha** 18mths. Another hound of overall sound construction. Carrying good length of ribbing and coupling, with good forechest. Looked v good on the move, covering the ground with effortless ease.
- 2) Wilson's **Shawema Golden Fasionation** 22mths. Substantial hound, good head with slightly light eye. V. good depth to chest. On the move looks a very strong bitch, not as steady as '1'. Shows white hairs around crowns, something I've not come across before.
- 3) Smith's **Nayassa Kipusa**

Novice Bitch 3 entries 1 absent

- 1) Brand's **Htimsa Abeo Holly** 8½ mths. Placed 3rd in very good MPB class, of good angulation front and rear, with good forechest. Lovely feminine head with good eye. Confident on the move. Another to watch in the future.
- 2) Wilson's **Shawema Golden Fasionation**

Tyro Bitch 5 entries 3 absent

- 1) Parson's **Touch Of Kryha**
- 2) Green's **Amini Sahibu** 2yrs. In v good condition, of good bone. Good angulation front and rear, of good ribbing, would like more length of coupling. Very pleasing head with good eye. Moved well, but met a very good moving hound in '1'.

Post Graduate Bitch 5 entries 1 absent

- 1) Macfall's **Afrikaner Aumba Morning Breeze** 2 yrs. Not a very strong class but v good quality hound took top spot. Of v good construction and substance but not over done. V sound on the move, with strength and balance. Would like a slightly darker eye. Excellent representative of the breed. Only fell at final hurdle to a v good Dog. BB & RBIS
- 2) Storey's **Kiromol Kizazi** 2yrs. Of reasonable construction, good length and depth of ribbing. Would like more length of coupling. Reasonable head, with good eye. Overall moved well covering plenty of ground, but at times tended to over exaggerate her stride.
- 3) Ellis's **Satnall Shannon**
Res - Holbrook's **Eilack Iniko Of Ngami**

Minor Limit Bitch 4 entries 1 absent

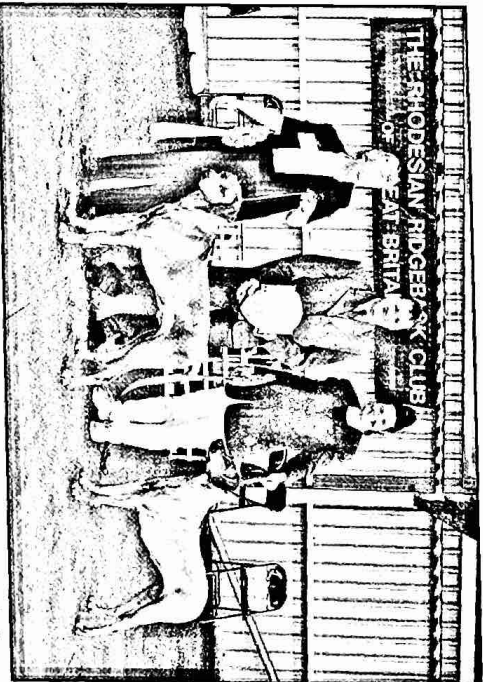
- 1) Mackfall's **Afrikaner Aumba Morning Breeze**
- 2) Davis's **Imola Indianapolis** 3yrs. Unlucky to meet such a hound in '1'. A well constructed bitch with feminine head but slightly round eye. V good front and rear angulation, of good bone and substance. Moved with effortless ease. Another that was considered in final bitch line up.
- 3) Gilfillan's **Itimpi Inksoi**.

Limit Bitch 8 entries 3 absent

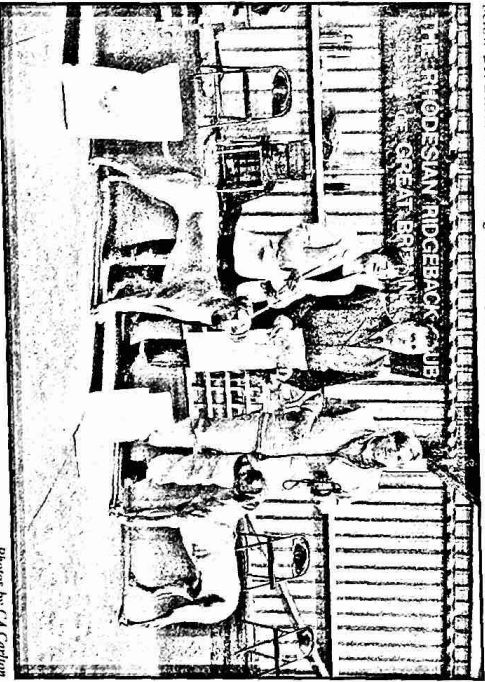
- 1) Scott's **Belstone Stephanie Of Selukwe** 4yrs. Reasonable head with good eye. Good rear construction, would like better front angulation. Of good length and depth of ribbing, with good coupling, good forechest. Best moving hound in class. Slightly off set crowns, but in overall scoring deserved her place in the class.
- 2) Agnew's **Janak Xamax Of Mwenga** 3yrs. Of reasonable overall construction with good ribbing, but lacks length of coupling. Nice feminine head with good eye. Good rear movement, front movement tends to be loose, which lets her down.
- 3) Thorne's **Kwe Kwe Kyusha**.
RES - Winstanley's **Madukani Of Maadfryt**.

Open Bitch 12 entries 4 absent

- As with the Dogs a very strong quality class.
- 1) Cunningham's Ch. Walamadengie Conquistidor - 3yrs. Hound of quality. Of good substance, bone and overall construction. V good length and depth of ribbing, with good coupling, excellent forechest. When on the move, in profile looks an absolute picture and hard to fault, but tends to just get herself out of line when viewed coming and going. Was very close to taking top bitch.
 - 2) Woodrow's Mirengo's Majuba 3yrs. Pushed hard for top spot in class. Another hound of quality, well constructed, of substance. Lovely feminine head with good eye. In v good condition, which showed in her excellent movement, covering the ground with balance, reach and drive. Could easily change places with '1' on a different day.
 - 3) Craven's Ch. Hespa Hebe J.W.
Res - Brown & Ringer's Flametrees Ruby Love
- Special Beginner's Bitch** 7 entries 4 absent 1wd
- 1) Smith's Nyassa Kipusa 20mths (3rd in SYB) Hound of reasonable construction. Overall good length and depth of ribbing with good forechest. Reasonable head with good eye. Steady unexaggerated movement.
 - 2) Giffillan's Ihimpi Inksoi 3yrs (3rd MLB) Overall similar constructed hound to '1', with good ribbing and forechest. Good front angulation, would like more turn of stifle. Tends to arch her back when on the move.



above BIS - Dog - Mirengo's Mojomo of Oseben, Res BIS - bitch - Afrikamer Aumba Morning Breeze
below BP Bitch - Briet Song of Kasenga, Res BP - dog - Maddfryt Manitoulin



Photos by CA Cartton